

SPECIFICATION MODEL CX-120A

IMPEDANCE 50 Ohms.



VOLTAGE

ACTUATION DATA:

VOLTAGE:

Pull in 9.0Vdc - 15Vdc (12Vdc Nominal)
Drop out 1.5Vdc Min.
Current 80mA @12Vdc 20°C
Coil resistance ... 150 Ohms 10% 20°C

SWITCHING TIME

SWITCHING TIME:

Pull in 20ms typical.
Drop out 15ms typical.
LIFE EXPECTANCY ... 1,000,000. Operation min.

MECHANICAL

MECHANICAL:

Contact arrangement SPDT
Operational temperature - 50°C to + 70°C
Weight Approx 70gs.
Mounting Two screws
Cable connections Directly connect cables.

ELECTRICAL CHARACTERISTICS

ELECTRICAL CHARACTERISTICS:

Frequency MHz	VSWR Max	Isolation -dB(min)	Ins.Loss -dB(max)	IN PUT RF Power W
50	1.05	60	0.05	250
150	1.1	50	0.1	200
500	1.3	40	0.2	150
1000	1.4	29	0.25	150

COIL CHARACTERISTICS

COIL CHARACTERISTICS:

Nominal Voltage

12Vdc

24Vdc

Voltage Range

9Vdc - 14Vdc

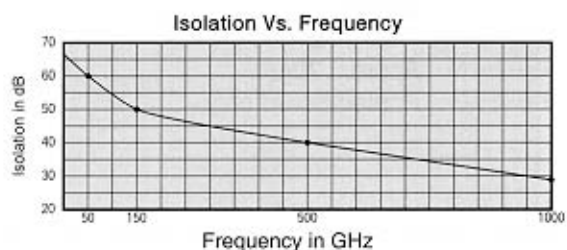
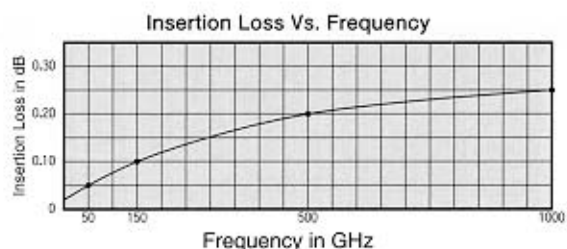
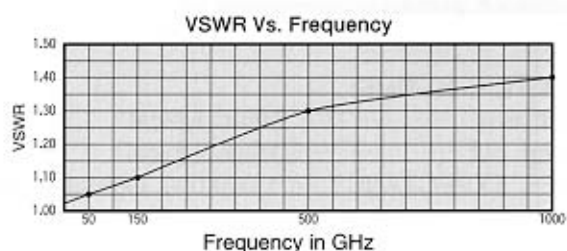
18Vdc - 26Vdc

Coil Resistance Ohms

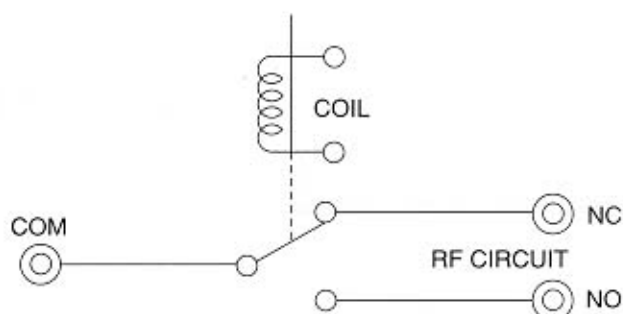
150 $\pm 10\%$ 20°C

600 $\pm 10\%$ 20°C

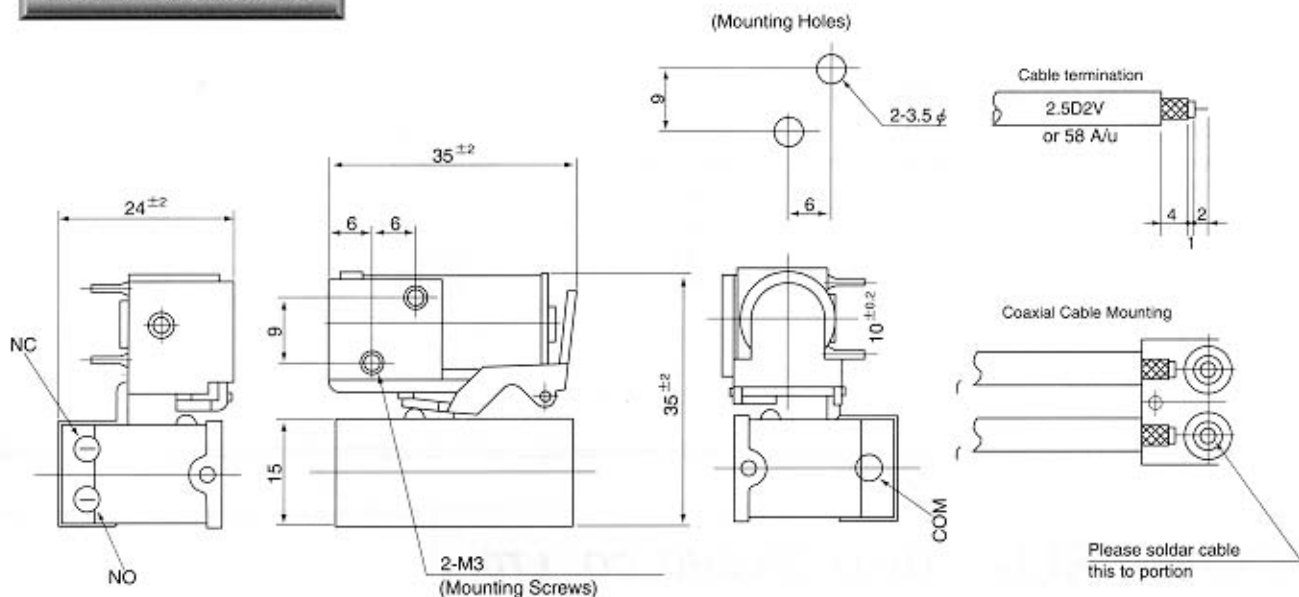
Typical Operating Curves



Schematic



DIMENSIONS



SCALE m/m